



Mid and South Essex
Integrated Care
System



Mid and South Essex

TSAB Lunchtime Learning

Safeguarding in an Integrated Care Board

Ines Paris
Designated Lead Safeguarding Nurse
02.2024

www.midandsouthessex.ics.nhs.uk

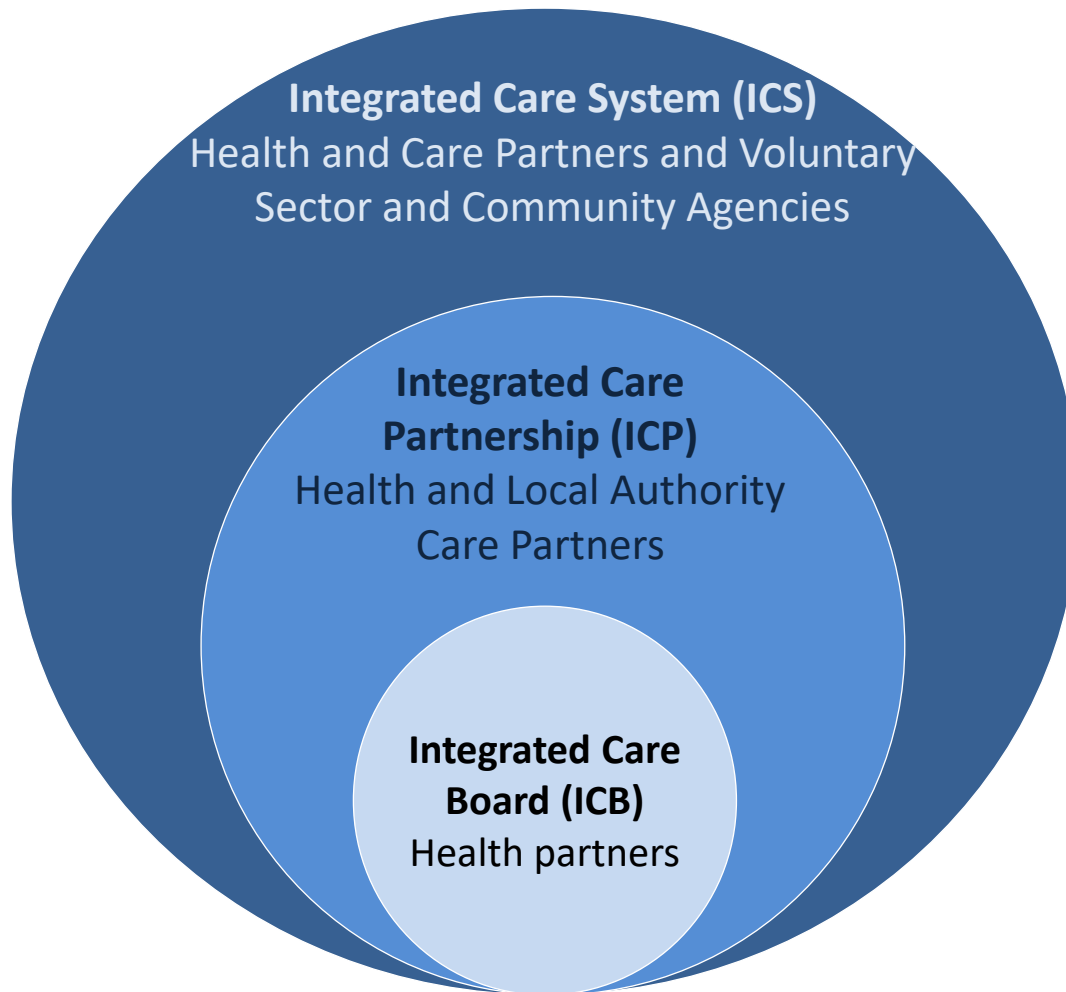


Today's session

- Brief introduction to Integrated Care Boards, Partnerships and Systems.
- Mid and South Essex ICB
- Safeguarding Adults and Children in MSE ICB, Primary Care and Health Providers – local landscape



What does Integrated Care Look Like?

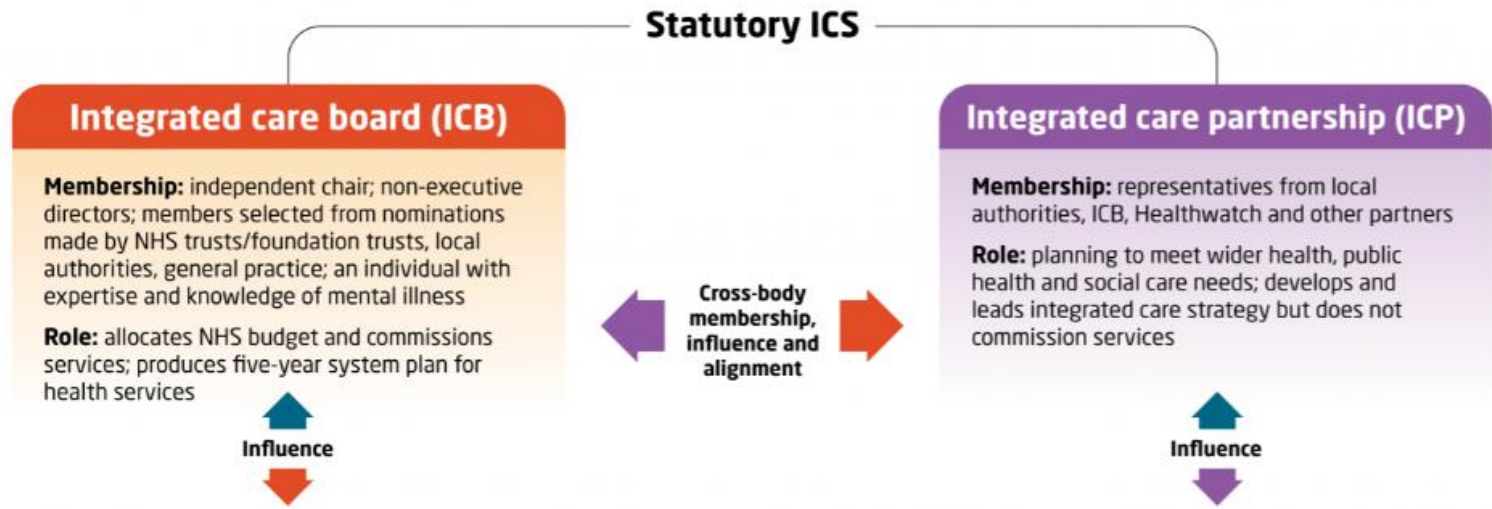


Integrated care systems (ICSs)

Key planning and partnership bodies from July 2022

NHS England
Performance manages and supports the NHS bodies working with and through the ICS

Care Quality Commission
Independently reviews and rates the ICS



Partnership and delivery structures		
Geographical footprint	Name	Participating organisations
System Usually covers a population of 1-2 million	Provider collaboratives	NHS trusts (including acute, specialist and mental health) and as appropriate voluntary, community and social enterprise (VCSE) organisations and the independent sector; can also operate at place level
Place Usually covers a population of 250-500,000	Health and wellbeing boards	ICS, Healthwatch, local authorities, and wider membership as appropriate; can also operate at system level
	Place-based partnerships	Can include ICB members, local authorities, VCSE organisations, NHS trusts (including acute, mental health and community services), Healthwatch and primary care
Neighbourhood Usually covers a population of 30-50,000	Primary care networks	General practice, community pharmacy, dentistry, opticians

The context

The Mid and South Essex Integrated Care Partnership (ICP) brings together a broad alliance of partners concerned with improving the health and wellbeing of the population.

The ICP has the responsibility for producing an Integrated Care Strategy setting out the ambitions of the partnership to help meet the health and wellbeing needs of the population.

In preparing the strategy, we undertook extensive engagement work with our partners and local residents and had regard for the regulatory and statutory requirements, particularly the four key aims established for ICS:

- Improving outcomes in population health and healthcare.
- Tackling inequalities in outcomes, experience and access.
- Enhancing productivity and value for money.
- Supporting broader social and economic development.

We also reviewed the 'triple aim' established for NHS bodies which requires them to consider the effects of decisions on:

- The health and wellbeing of the people of England (including inequalities in that health and wellbeing).
- The quality of services provided or arranged by both them and other relevant bodies (including inequalities in benefits from those services).
- The sustainable and efficient use of resources by themselves and other relevant bodies.



Integrated Care Systems (ICSs):

All of the organisations that come together to plan and deliver joined-up health and care services and to improve the lives of people who live and work in their area.



Integrated Care Board (ICB):

A statutory NHS organisation responsible for developing a plan for meeting the health needs of the population, managing the NHS budget and arranging for the provision of health services in the Integrated Care System area.



Integrated Care Partnership (ICP):

A statutory committee jointly formed between the NHS ICB and all upper tier local authorities that fall within the ICSs area (councils with responsibility for children's and adult social care and public health).

The challenges

This is a time of great challenge across the health and care system.

There is rising demand for health and care services with many people having more complex needs.

Our workforce is tired having fought through the pandemic and now recovering services, whilst managing the challenges of increased vacancies and sickness rates.

And we are experiencing significant financial pressure both organisationally and personally as the cost-of-living increases.

Some of the things we have traditionally done are no longer working. Increasingly we must embrace the opportunity of collaborative working to meet our challenges and invest in our future.

i The Health and Care Act (2022) established forty-two ICSs across England on a statutory basis on 1 July 2022.

Three overarching themes featured across our 27 partner strategies:



Persistent inequalities – particularly impacting Basildon, Thurrock and Southend



Growing and ageing population – impacting on health conditions such as dementia, cardiovascular disease, cancer, diabetes, chronic obstructive pulmonary disease, leading to challenges for frailty, social isolation and the need to bring care closer to home.

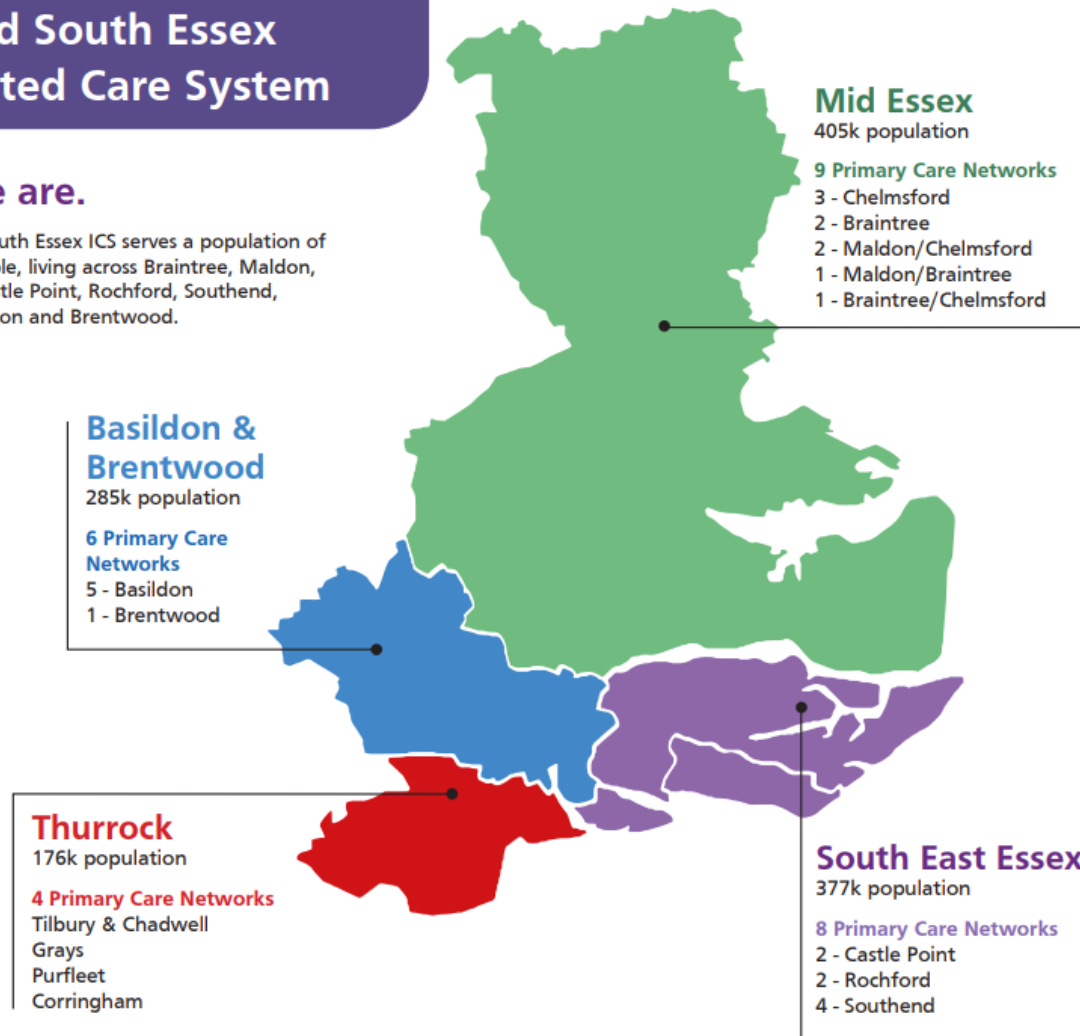


Mental health conditions – focusing on, suicide rates, support to talk about mental health, reducing stigma and bringing communities together.

Mid and South Essex Integrated Care System

Who we are.

The Mid and South Essex ICS serves a population of 1.2 million people, living across Braintree, Maldon, Chelmsford, Castle Point, Rochford, Southend, Thurrock, Basildon and Brentwood.



Our partnership comprises the following:



Three top tier local authorities and seven district, borough and city councils



Nine voluntary and community sector associations



One hospital trust with main sites in Southend, Basildon and Chelmsford



Three main community and mental health service providers who work as a community collaborative



One ambulance trust



Three healthwatch organisations



Over 149 GP practices, operating from over 200 sites, forming 27 Primary Care Networks



A range of other partners, including Essex Police and our three local universities



Mid and South Essex
Integrated Care
System



Mid and South Essex

MSE ICB All-age Safeguarding Team

Mid and South Essex All-age Safeguarding team

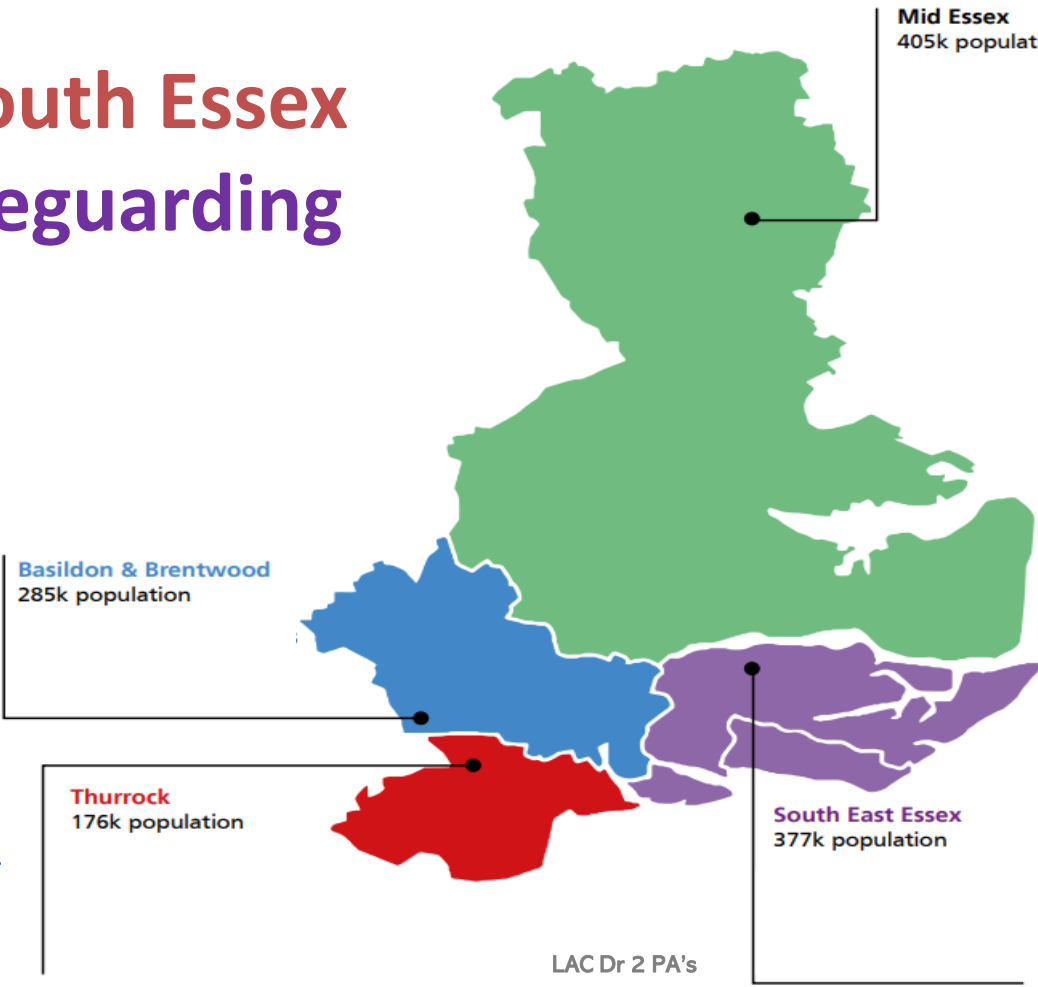
South West Essex (Basildon & Brentwood and Thurrock)

2 Alliances
10 Primary care Networks

Team: Designated Lead Nurse (1), Associate Designate Nurse (2); Safeguarding Specialist Nurse (1); Designated Doctor (3 PAs); Child Death Review Doctor (2PAs); Named Professionals Adults & Children (3 PAs)

Thurrock Statutory Partnerships

Strategic / System lead:
Community Collaborative;
Primary Care; Children Portfolio



Mid Essex
405k population

Mid Essex

1 Alliance
9 Primary care Networks

Team: Designated Lead Nurse (1), Associate Designate Nurse (2); Safeguarding Specialist Nurse (1); Designated Doctor (3 PAs across Mid, North and West Essex); Child Death Review Doctor (1.5 PAs); Named GP (3PAs)

Essex Statutory Boards

Strategic / System lead: Acute Hospital contract; Look After Children Portfolio

South East Essex (Castlepoint & Rochford and Southend)

1 Alliance
9 Primary care Networks

Team: Designated Lead Nurse (1), Associate Designate Nurse (2); Safeguarding Specialist Nurse (1); Designated Doctor (3 PAs); Child Death Review Doctor (2 PAs); Named GP (3PAs)

Southend Statutory Partnerships

Strategic / System lead: Care Homes, Continuing Health Care, Adult Portfolio

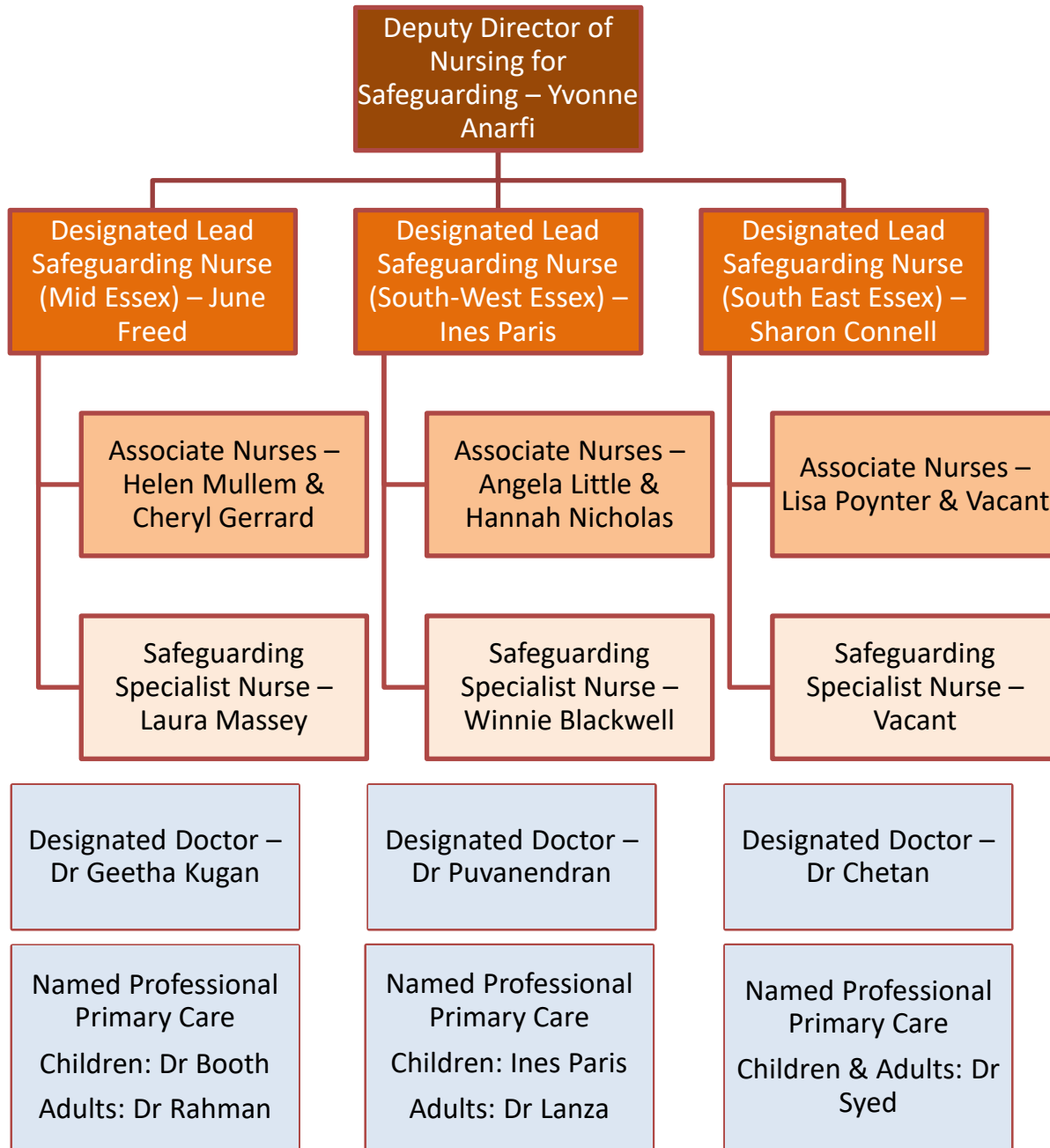
Basildon & Brentwood
285k population

Thurrock
176k population

South East Essex
377k population

LAC Dr 2 PA's

Mid and South Essex - All-age Safeguarding team



MSE ICB Safeguarding Team

Roles and Responsibilities at a glance

Strategic and professional lead role across healthcare services on all aspects of safeguarding

Influence and participate in regional/national forums for child/adult safeguarding and LAC, child death, Prevent, MCA/LPS

Safeguarding advice and clinical expertise for MSE health economy and all relevant partner agencies.

Delivery of the ICB's statutory safeguarding functions.

Restorative safeguarding supervision for Named/Lead Safeguarding Professionals across the health economy

Influence at all points in the commissioning cycle from procurement to quality assurance.

Statutory Safeguarding Partner to Essex, Southend and Thurrock (SET) Boards / Partnerships

Strategic Lead for ICB to SET Boards and Committees for Prevent and Domestic Abuse

Lead for ICB in joint responsibility with Local Authorities for Child Death Review

Development and delivery of single and multi-agency safeguarding learning in partnership with the health economy and safeguarding partners.

Working with Local Authorities to discharge the ICB's responsibilities as a Corporate Parent

Advising and supporting healthcare services to ensure adherence to legislation, policy, and key statutory and non-statutory guidance

Actively contribute to and quality assure the health content of Child Safeguarding Practice Reviews, Safeguarding Adult Reviews, Domestic Homicide Reviews, Multi-agency Audits

Ensuring robust systems, procedures, policies, professional guidance, training, and supervision are in place within all provider organisations commissioned by the ICB

Escalation and resolution of professional disagreements between safeguarding partners



Mid and South Essex
Integrated Care
System



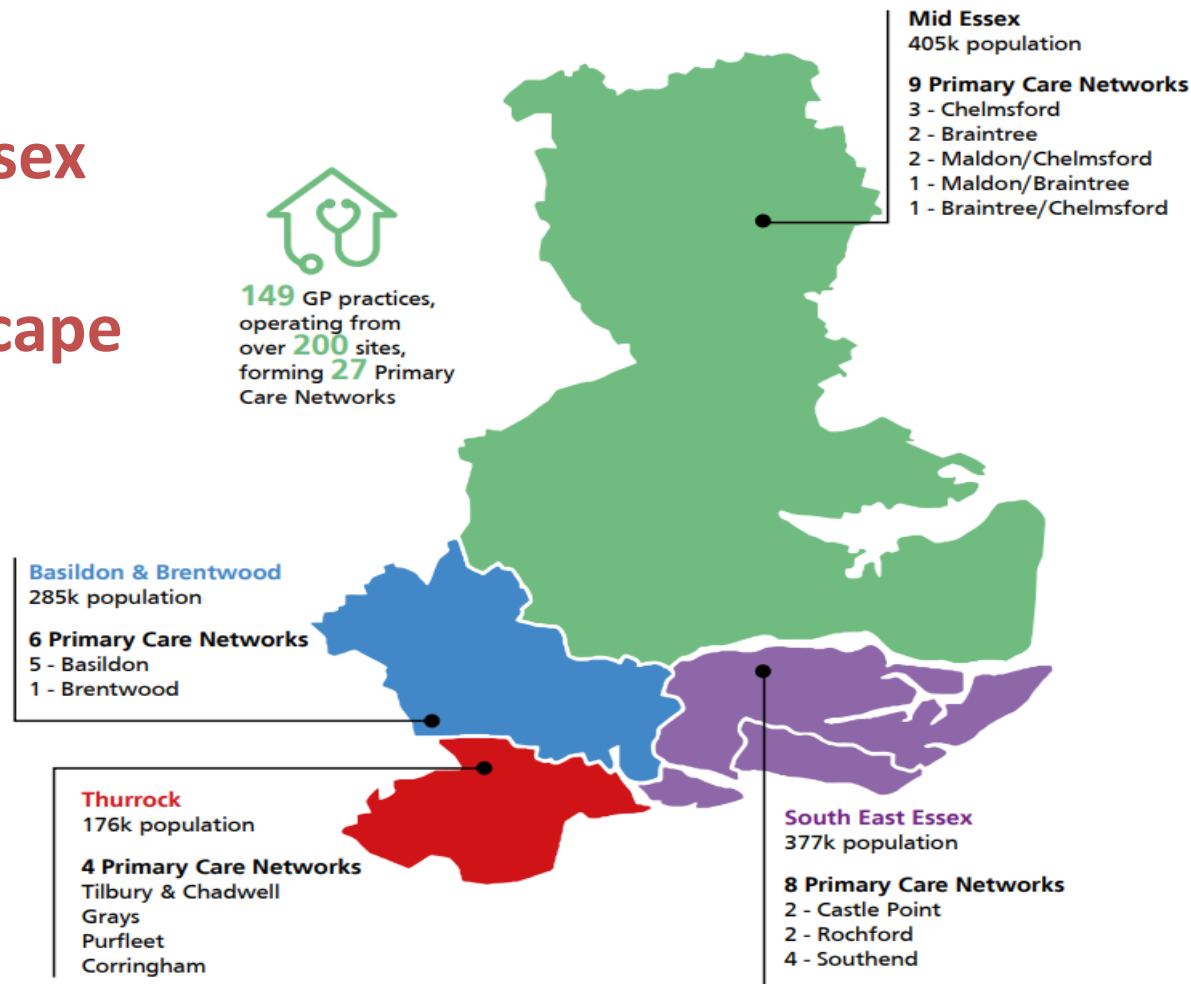
Mid and South Essex

MSE ICB

Safeguarding Assurance in Primary Care



Mid and South Essex GP Practice landscape





MSE ICB GP Practice Safeguarding Assurance

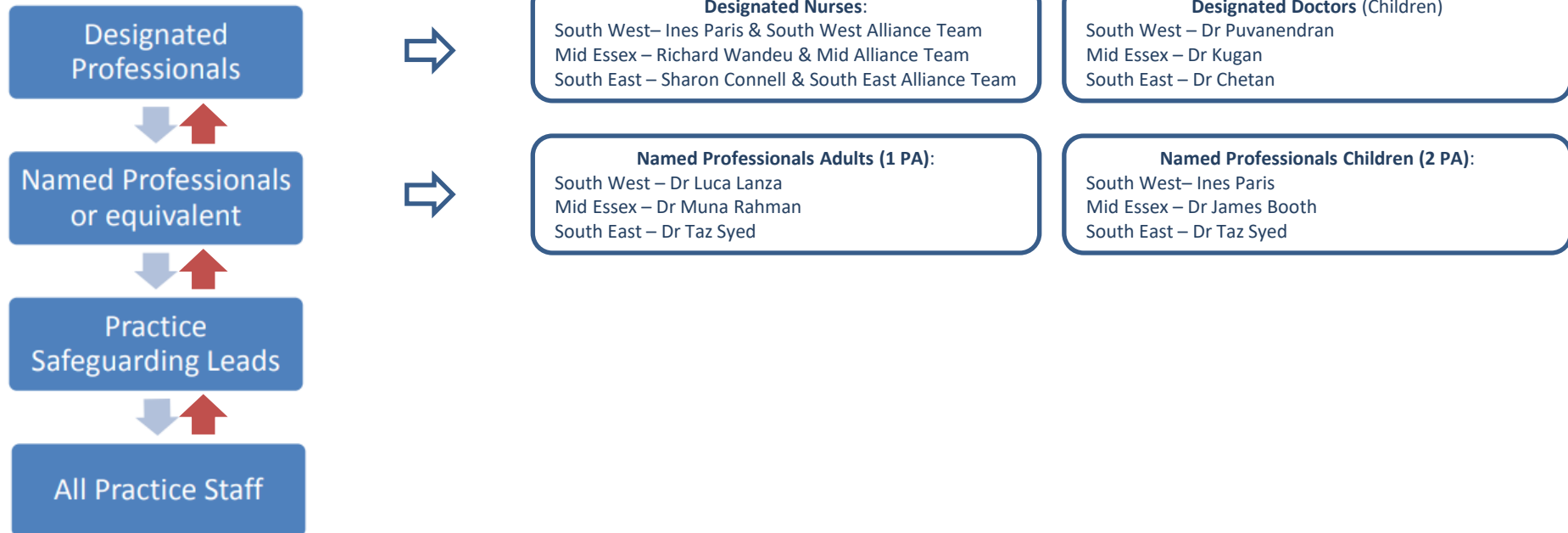
Based on legislation and guidance, such as Children Act 2004 (Section 11), Intercollegiate Documents (training requirements for all staff, Named Professional for Primary Care role), RCGP Safeguarding Tool Kit.

- (1) Named GPs / Professionals for Primary Care(Adults & Children) & Strategic Lead Designated Nurse**
- (2) All-age Primary Care Safeguarding Audit Strategy**
- (3) Primary Care Learning and Development Strategy**
- (4) Process for safeguarding serious incidents, and safeguarding reviews.**





Safeguarding Structures - Escalation

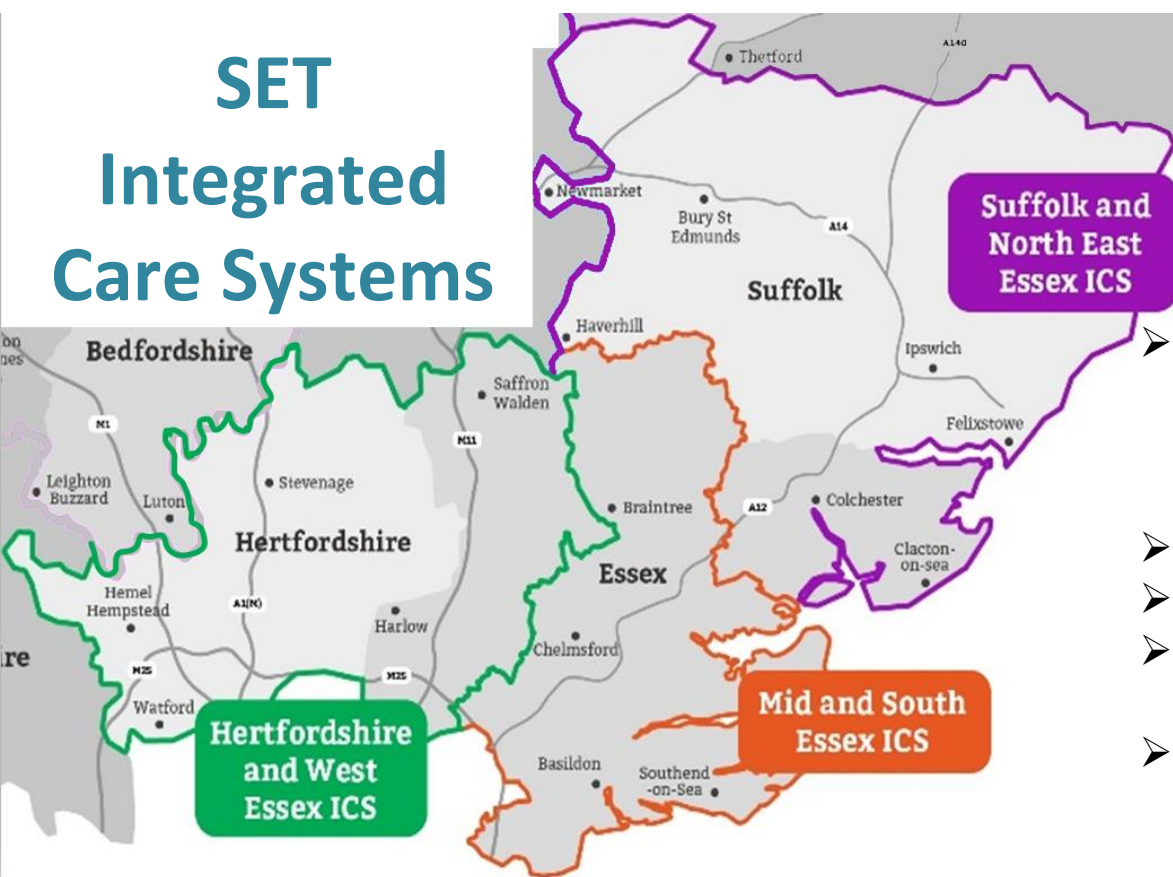


[RCGP Safeguarding toolkit](#)





SET Integrated Care Systems

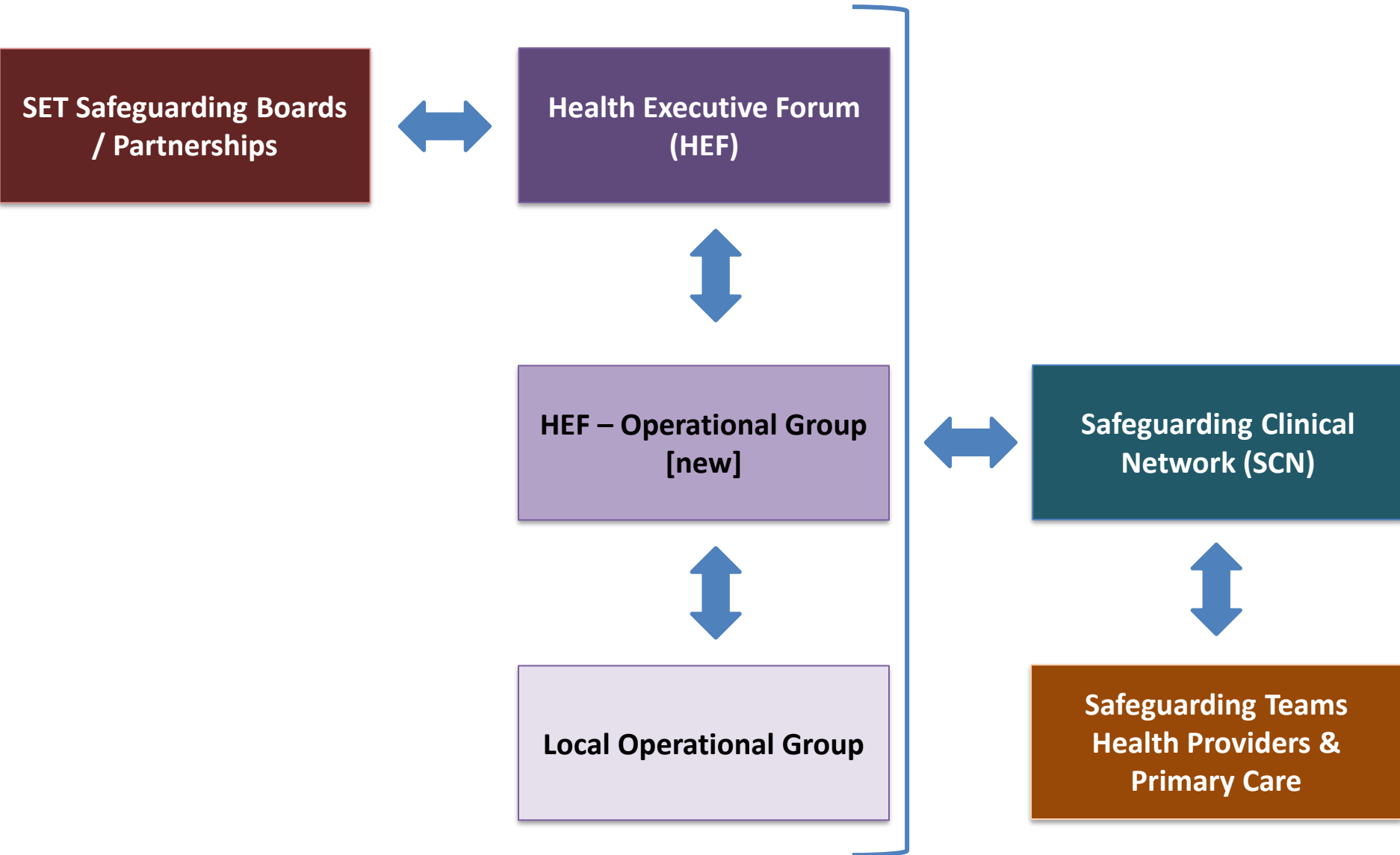


- **x3 Safeguarding Children Partnerships** (made of Health, Police and Local Authority representatives) – Essex, Southend, and Thurrock
- **x3 Local Authorities**
- **x1 Police force**
- **Early Years, Primary schools & Secondary Schools**
- **Voluntary Sector**

Health (main):

- **x3 Integrated Care Boards / Systems** – North-East Essex & Suffolk; Hertfordshire & West Essex; Mid and South Essex (including Thurrock and Southend)
- **x3 Hospital Trusts** (5 main sites)
- **x3 main Community Health Providers**
- **x3 0-19 Health Service Providers**
- **x1 sexual assault centre**
- **x1 Ambulance trust**
- **x224 GP Practices**

Safeguarding interface across SET



Useful Links



[https://www.carnallfarrar.com/kings-fund-
animated-guide-developed-in-partnership-
with-cf/#iLightbox\[gallery2091\]/0](https://www.carnallfarrar.com/kings-fund-animated-guide-developed-in-partnership-with-cf/#iLightbox[gallery2091]/0)

With a **shared ambition** to help our
communities thrive, we achieve the
best for everyone.



<https://www.youtube.com/watch?v=XC3q6RZX6AI>

NHS Find your local
integrated care
board (ICB)

[Find your local integrated care board \(ICB\) - NHS
\(www.nhs.uk\)](https://www.nhs.uk)



Mid and South Essex
Integrated Care
System



Mid and South Essex

www.midandsouthessex.ics.nhs.uk

